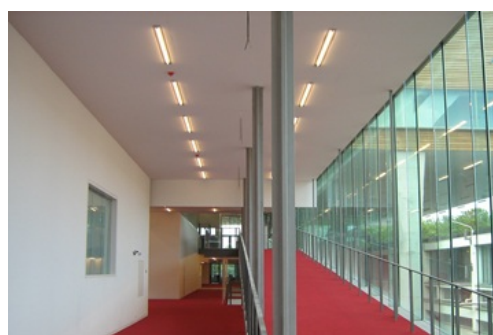
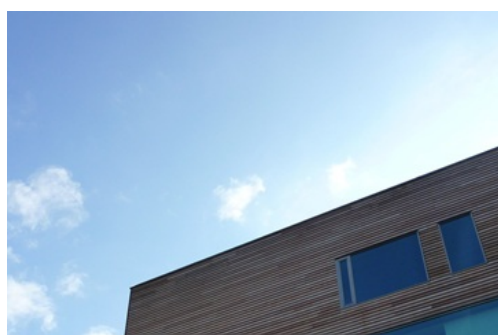


deSingel - Fase 4.2

In stage 4.2, an extension by some 12,000 m² is planned for the Singel International Arts Centre.

This extension should provide additional space for lecture and repetition rooms, exhibition areas, mid-size halls, a visitors' cafeteria and facilities for both the Singel location and the Antwerp University. Ingenium has managed to perform the design of the technical systems for HVAC, electrical circuitry, sanitary facilities and fire fighting within a strict budget and tight timing.



Reference: 03031.001

Developer

Flemish government
University Antwerp

Designer / Architect

Stéphane Beel Architecten
bvba

Location

Antwerp

Budget technics

approx. 3.500.000 EUR
(excl. tax)

Surface

12.000 m²

Periode

Study:

2003 - 2010

Sectors

Culture & Heritage

Services

Building services
engineering