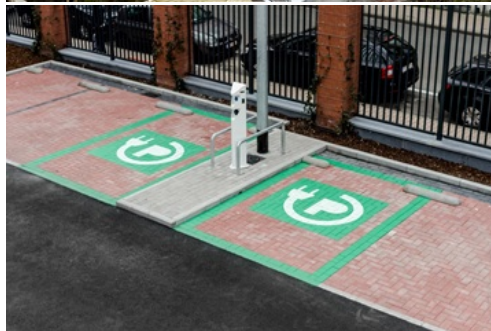


Lidl Ixelles - a CO₂ neutral store

Ingenium assisted Lidl Belgium with the conversion of their store in Ixelles into an ECO₂logical store. The following substudies were performed:

- Energetic advice for the conversion of the old store in Ixelles into a CO₂ neutral store
- Design of the electrical system (low and high voltage)
- Site follow-up during implementation
- Support and advice regarding communication (to the public, the press ...) for the new Ixelles store
- Preparation of the file and guidance for the recognition of Lidl store in Ixelles as a GreenBuilding Partner by the European Union
- Monitoring the energy of the new store and comparing the actual energy consumption with the consumption estimated in advance



Reference: 12038.001

Developer

Lidl Belgium Gmbh & Co
KG

Designer / Architect

Montois Partners
Architects

Location

Ixelles

Surface

1.250 m²

Period

Study: 08/2012 - 03-2014

Sectors

[Retail & Logistics](#)

Services

[Sustainability &
Certifications](#)
[Strategy & masterplan](#)
[Building services
engineering](#)