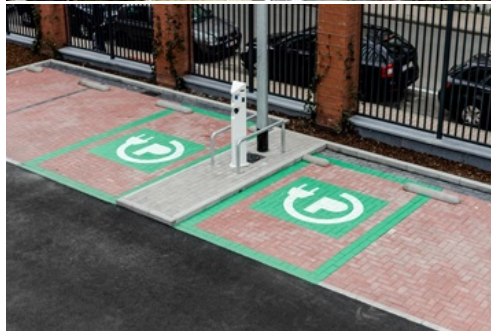


## Lidl Ixelles - a CO<sub>2</sub> neutral store

Ingenium assisted Lidl Belgium with the conversion of their store in Ixelles into an ECO<sub>2</sub>logical store. The following substudies were performed:

- Energetic advice for the conversion of the old store in Ixelles into a CO<sub>2</sub> neutral store
- Design of the electrical system (low and high voltage)
- Site follow-up during implementation
- Support and advice regarding communication (to the public, the press ...) for the new Ixelles store
- Preparation of the file and guidance for the recognition of Lidl store in Ixelles as a GreenBuilding Partner by the European Union
- Monitoring the energy of the new store and comparing the actual energy consumption with the consumption estimated in advance



Reference: 12038.001

### Developer

Lidl Belgium Gmbh & Co  
KG

### Designer / Architect

Montois Partners  
Architects

### Location

Ixelles

### Surface

1.250 m<sup>2</sup>

### Period

Study: 08/2012 - 03-2014

### Sectors

Retail & Logistics

### Services

Sustainability &  
Certifications  
Strategy & masterplan  
Building services  
engineering