

Texaco Drogenen

The existing service stations of Texaco situated along the E40 in Drogenen have been used since 20 years. The intensive use of these stations makes a replacement necessary. Because Ingenium emphasized the importance of sustainability already during the competition phase, it has won the competition.

The existing service stations of Texaco situated along the E40 in Drogenen have been used since 20 years. The intensive use of these stations makes a replacement necessary. Because Ingenium emphasized the importance of sustainability already during the competition phase, it has won the competition. The project contains the refurbishment of the service areas including the surrounding environment and the establishment of new service stations. These two stations include a canopy, shop, restaurant, kitchens, meeting and service rooms and sanitary constructions.

Ingenium designs within this project all the technical equipment that belongs to a servicestation. Ingenium moreover watches that the ambitions concerning sustainability, mentioned in competition phase are realized. To that the BREEAM-method is used. Through this instrument all aspects of sustainability are checked: Comfort and energy simulations, daylight simulations under BREEAM certification with TRNSYS / DAYSIM.

In terms of energy production this means that PV panels on a suntracker system will be placed as well as a cogeneration plant. Ingenium performed several simulations to optimize the energy efficiency of the building and to achieve optimal visual and thermal comfort.

Finally Ingenium is also in charge of the EPB reporting. Ingenium is in this project the overall partner for all aspects of technology and sustainability.

Developer

EFR Belgium

Designer / Architect

Abcis

Location

Drogenen

Budget technics

2.500.000 EUR (excl. TAV)

Surface

5150 m²

Periode Study:

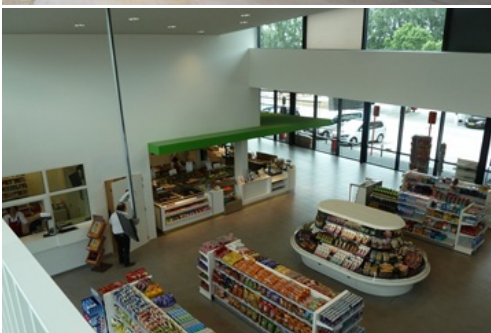
2011-2013

Sectors

[Retail & Logistics](#)

Services

[Sustainability & Certifications](#)
[Building services engineering](#)





Reference: 11043.001