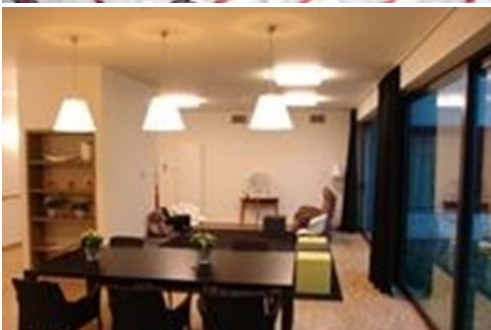


Residential care center Sint-Jozef, Lichtervelde

The Lichtervelde Social Services (OCMW) opted for a totally new building in replacement of its ageing home for the elderly. Ingenium is in charge of the design and guidance during execution of the technical equipment.

The Lichtervelde Social Services (OCMW) opted for a totally new building in replacement of its ageing home for the elderly. The new building will comprise 75 living quarters of which six are reserved for couples where one of the partners suffers from dementia, as well as a short stay centre that can accommodate three guests. The new building will also house a local service centre and a central kitchen. The building will be erected at the location of the existing retirement home, so that the work will have to be performed in steps. Ingenium is in charge of the design and guidance during execution of the technical equipment.

Energy efficient preheating of the ventilation air during wintertime and top cooling during the summer will be provided by means of buried pipes.



Reference: 05030.001

Developer

OCMW Lichtervelde

Designer / Architect

OSAR architects

Location

Lichtervelde

Budget technics

approx. 2.920.000 EUR
(excl. tax)

Surface

7.320 m²

Periode
Study:

2006 - 2010

Sectors

Care

Services

Building services
engineering