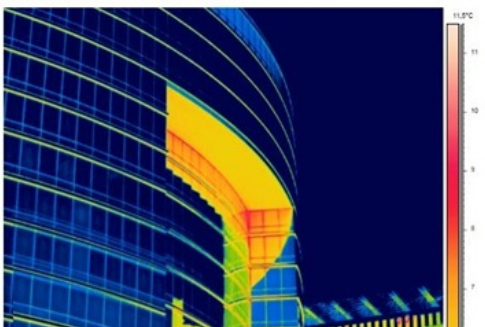
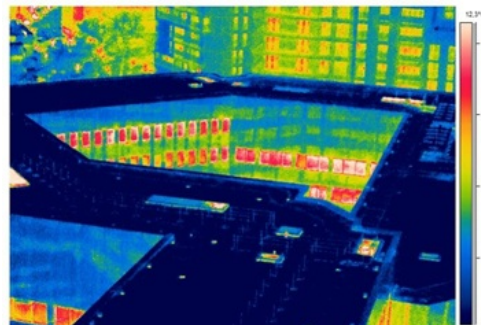
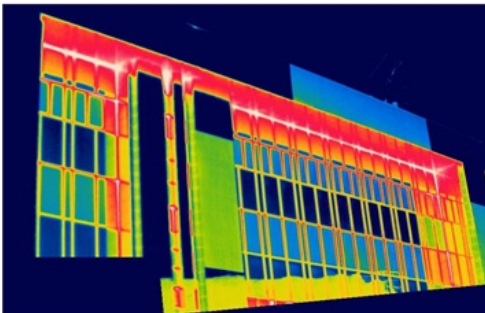


Energy audit European Council

The European Council wishes to improve the energy performance of their buildings. Energy audits will be carried out for 3 buildings: Justus Lipsius (146.500 m²), Lex Consilium (57.600 m²) and Creche (4.800 m²). The energy audits must meet the requirements imposed by the Brussels-Capital Region within the framework of environmental regulations.



Reference: 15013.001

Developer

European Council

Location

Brussels

Surface

300.000m²

Periode

Study: 03/2015 - 05/2018

Sectors

Smart Office building

Services

Strategy & masterplan
Building services
engineering