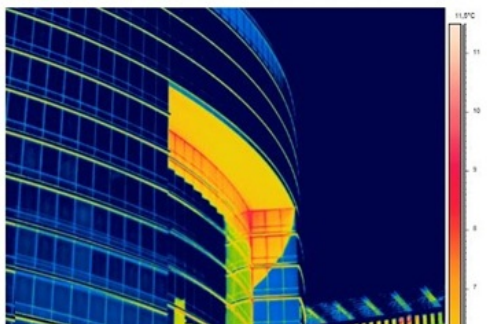
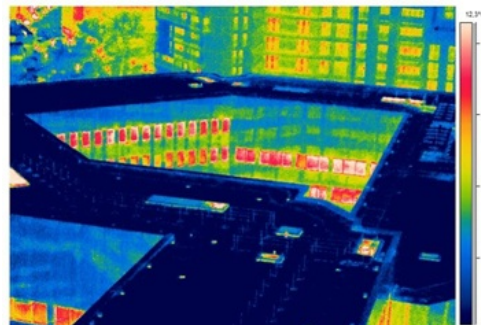
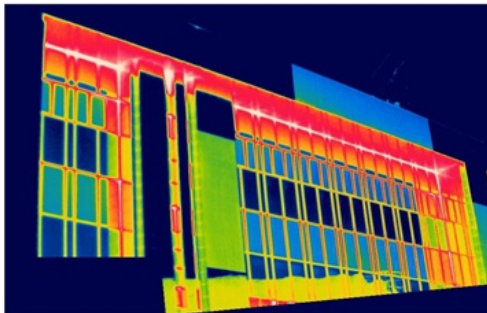


## Energy audit European Council

The European Council wishes to improve the energy performance of their buildings. Energy audits will be carried out for 3 buildings: Justus Lipsius (146.500 m<sup>2</sup>), Lex Consilium (57.600 m<sup>2</sup>) and Creche (4.800 m<sup>2</sup>). The energy audits must meet the requirements imposed by the Brussels-Capital Region within the framework of environmental regulations.



Reference: 15013.001

### Developer

European Council

### Location

Brussels

### Surface

300.000m<sup>2</sup>

### Periode

Study: 03/2015 - 05/2018

### Sectors

Smart office building

### Services

Strategy & masterplan  
Building services  
engineering