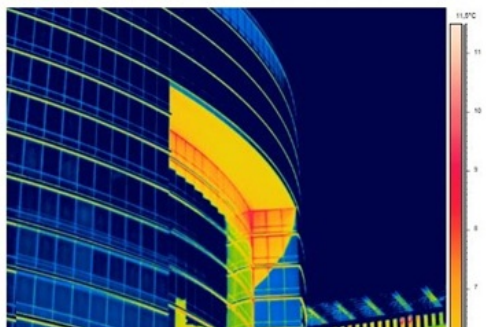
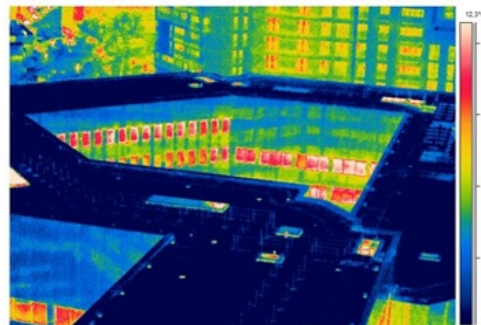
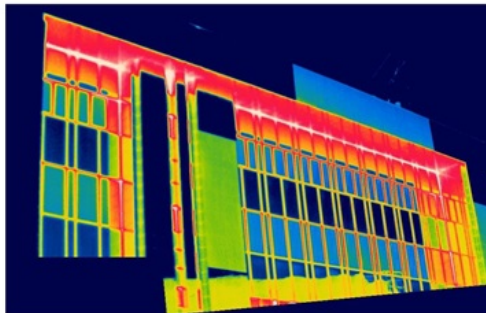


# Energy audit European Council

The European Council wishes to improve the energy performance of their buildings. Energy audits will be carried out for 3 buildings: Justus Lipsius (146.500 m<sup>2</sup>), Lex Consilium (57.600 m<sup>2</sup>) and Creche (4.800 m<sup>2</sup>). The energy audits must meet the requirements imposed by the Brussels-Capital Region within the framework of environmental regulations.



Reference: 15013.001

## Developer

European Council

## Location

Brussels

## Surface

300.000m<sup>2</sup>

## Periode

Study: 03/2015 - 05/2018

## Sectors

Smart office building

## Services

Strategy & masterplan  
Building services  
engineering